

CINCINNATI MACHINES

Cf Series

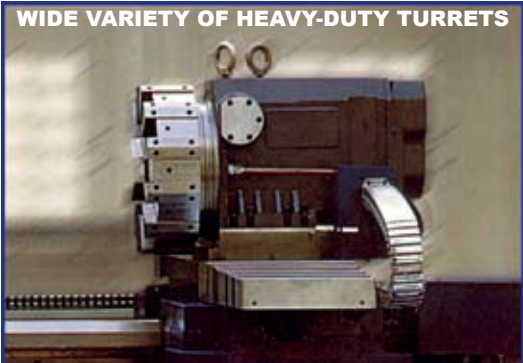


**BIG BORES
BIG SWING
BIG CAPACITY
BIG CENTERS
BIG POWER**



MASSIVE HEAVY-DUTY CASTINGS

CF Series Very Large Heavy-Duty CNC Flatbed Lathes are designed and built from the ground up with massive heavy-duty meehanite castings to handle those very large parts up to 80" diameter and 480" long. Add to that the very powerful spindle drives with four range gear box, precision heavy-duty ballscrews and servo drives, hardened and ground ways, and the Fanuc 18iT CNC, and you have got a very serious machine. There are literally hundreds of sizes and configurations of CF Very Large Heavy-Duty CNC Flatbed Lathes available to handle a wide variety of applications, such as, oilcountry, steel and paper mills, power plants, ship building and the textile industry.



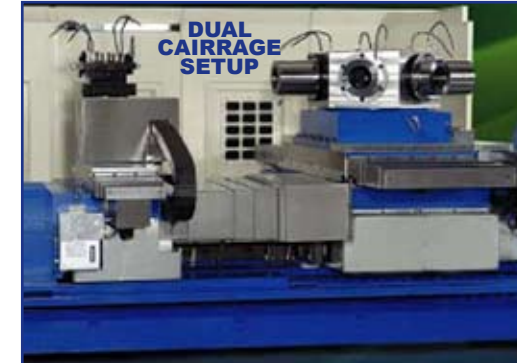
LARGE SERVO CONTROLLED TURRETS

The large Heavy-Duty Servo Controlled Turret provides the maximum combination of rigidity and versatility to handle those very large parts. Available with H4, H6, V8, V12, or Live Turrets.



HEAVY-DUTY CASTINGS, WAYS, BALLSCREWS

The Heavy-Duty high quality meehanite cast bed features massive hardened and ground bed-ways. The single piece design has the entire bed resting on the ground for maximum support and rigidity.



HAND-CRAFTED TO YOUR REQUIREMENTS

Choose from unique optional features, such as Dual Chucks, Dual Turret, Dual Cairrage, Live Tooling, C-Axis, Sub-Spindle, Feed-Thru-Steady Rest Setup, Y-Axis, etc. to meet your specific turning needs.

Model	CF Heavy-Duty Series				CFH Very Heavy-Duty				CFHD Extra Heavy-Duty				CFXD Super Heavy-Duty			
	35	40	45	50	45	50	60	70	35	40	45	50	50	60	70	80
Center height (inch)	17.5	20	22.5	25	22.5	25	30	35	17.5	20	22.5	25	25	30	35	40
Swing over bed	35	40	45	50	45	50	60	70	35	40	45	50	50	60	70	80
Swing over crossslide	20	25	30	35	28	33	43	53	16	21	26	31	29	39	50	60
Wgt. (lbs) 60" centers	28600	29600	30140	30910	35640	36520	38280	40040	45540	47740	49940	52140	58740	62040	65340	68640
Center distance	60	80	120		160	200	240		280	320	360	400	440	480		
Add for each 20" CC.	2200lbs				3520lbs				5500lbs				8800lbs			
Bed width	22"				28"				40"				47.5"			
Spindle Power	40HP (50HP Mtdr.) - (50/60-Opt)				50HP (60HP Mtdr.)				50HP (60HP Mtdr.)				60HP (75HP Mtdr.) - (80/100-Opt)			
Axis drive power	X axis 5HP		Z axis 5HP		X axis 6HP		Z axis 6HP		X axis 6HP		Z axis 6HP		X axis 8HP		Z axis 11HP	
Ballscrew diameter	X axis (1.5")		Z axis (2.5")		X axis (1.75")		Z axis (3")		X axis (2")		Z axis (3")		X axis (2.3")		Z axis (4")	
Spindle nose (Std)	A2-11 (6" bore)				A2-22 (6" bore)				A2-11 (6" bore)				A2-15 (9" bore)			
Quill Diameter	9.25"				9.25"				9.25"				11"			

TYPICAL STANDARD SPINDLE SPEED CHART										
Spindle nose/bore		A2-11 (6")	A2-15 (9")	A2-15 (10")	A2-20 (12")	A2-20 (14")	A2-28 (16")	A2-28 (21")	A2-32 (25")	
Spindle Speeds	R	1	18-130rpm	16-120rpm	13-95rpm	12-85rpm	10-75rpm	8-50rpm	6-40rpm	4-25rpm
	a	2	35-260rpm	30-200rpm	25-185rpm	23-170rpm	20-150rpm	15-100rpm	12-80rpm	8-50rpm
	n	3	85-550rpm	70-420rpm	60-400rpm	55-300rpm	50-250rpm	35-200rpm	30-180rpm	20-140rpm
	g	4	165-1000rpm	150-700rpm	120-600rpm	110-400rpm	95-350rpm	65-300rpm	50-250rpm	40-220rpm



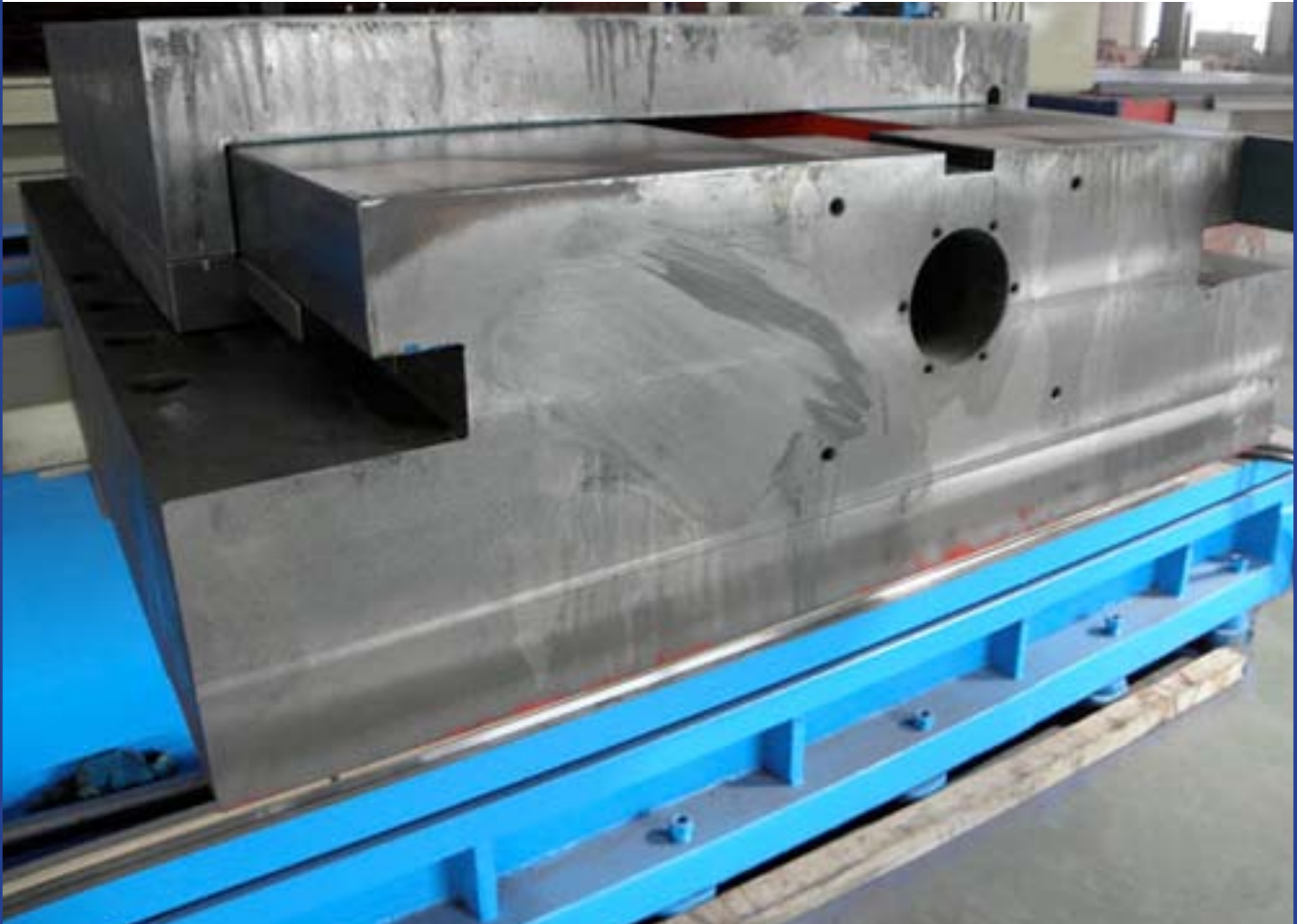
Massive Extreme-Duty Castings, Ballscrews, & 4-Ways



Massive Extreme-Duty Tailstock



Massive Extreme-Duty Carriage and Crossslide Castings



Massive Extreme-Duty Holes to 53"



Massive Extreme-Duty Swing & Chucks

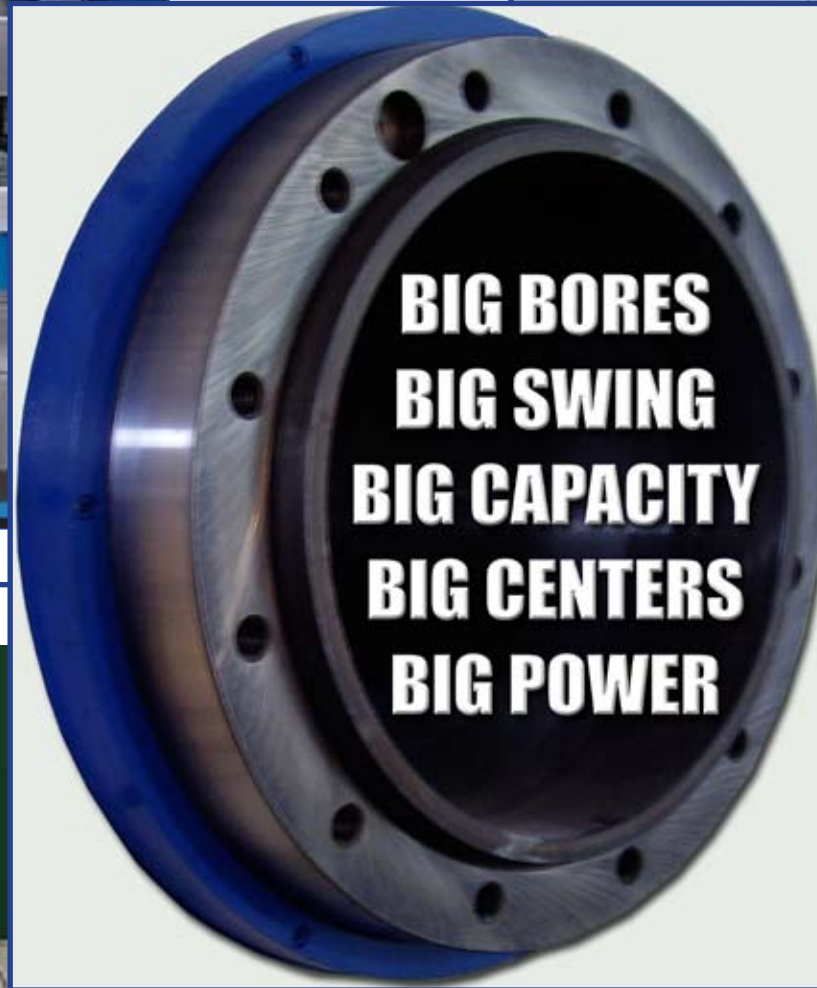


Multiple Tool-Posts



**Heavy
Duty**

Large Swing & Chuck with Dual Tool-Posts



Multiple Carriages



Live-Tooling with C-Axis and Y-Axis



**State of
the Art
Features**

STANDARD EQUIPMENT

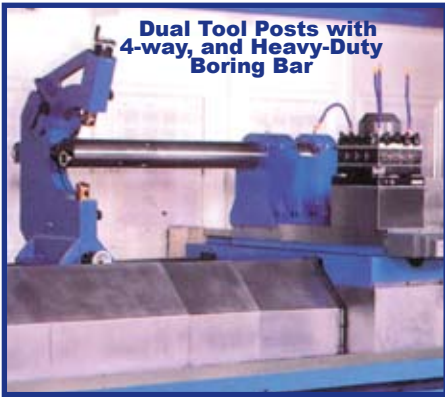
- Fanuc 18iT CNC
- Servo controlled turret (H4, H6, V6, or V12)
- Programmable tailstock
- 4 Range Headstock
- Coolant system
- Automatic lubrication
- Chip/coolant guarding
- Hydraulic oil chiller
- Dual Chip conveyor
- A2-11 (6" bore)
- A2-15 (9" bore) - CFXD series

BIG SPINDLE HOLES

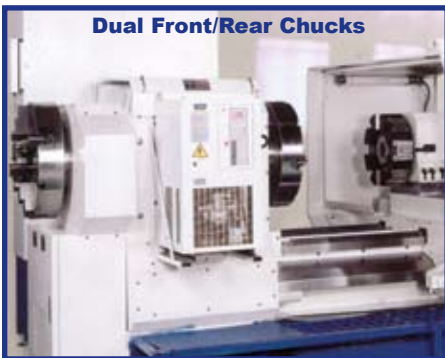


OPTIONAL ACCESSORIES

- 3-jaw and 4-jaw chucks up to 60" dia.
- Faceplates up to 80" dia.
- Larger Spindle Holes up to 25" diameter
- Manual or Hydraulic Steady Rests.
- Follow Rests.
- Feed-Thru Steady Rest Capability
- Rear Chuck Adaptor/Front-Rear Chucks
- Dual Turrets
- Dual Cairrages
- Digital Scales
- C-axis & Live Tooling
- Y-Axis



Dual Tool Posts with 4-way, and Heavy-Duty Boring Bar



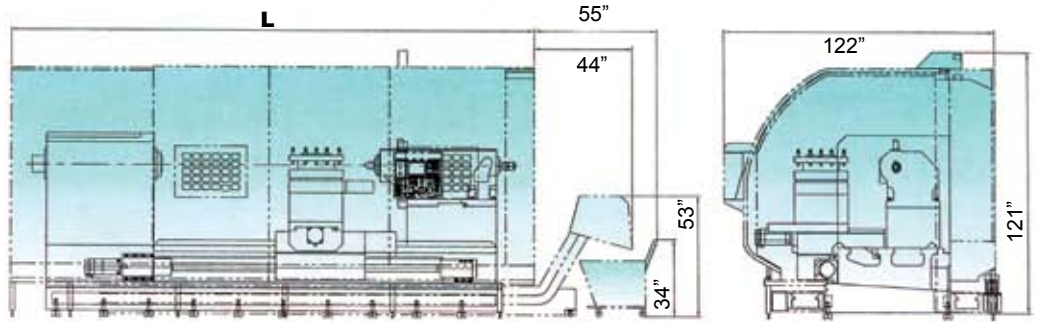
Dual Front/Rear Chucks

CONSTRUCTION FEATURES

- Heavy meehanite castings
- Hardened and ground ways
- Turcite B way coating
- Large diameter precision ballscrews
- Heavy-duty powerful 4 range gear box
- Large spindle bores up to 25" dia.

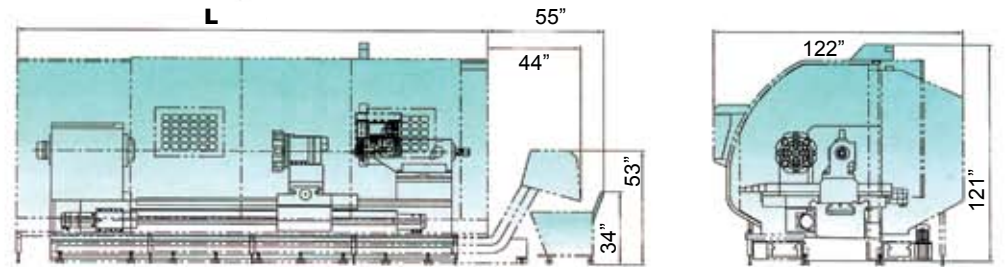


Machine Specifications and Features shown in this brochure are provided as a guide only and are subject to change without notice



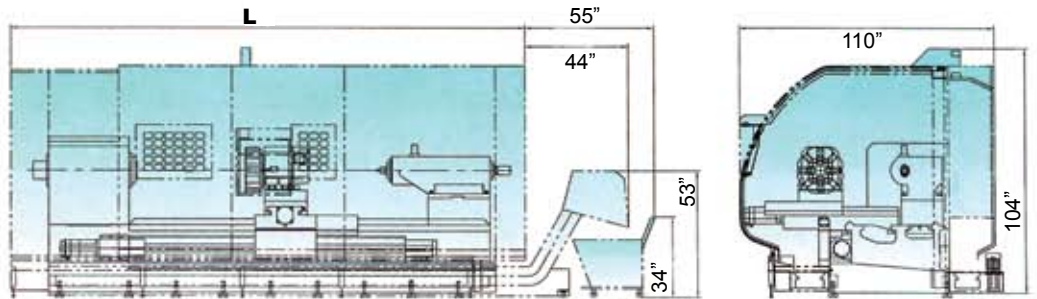
L (inches)	234	274	314	354	394	434	474	514	554	594	634
Center distance	80	120	160	200	240	280	320	360	400	440	

CFXD Series Dimensions



L (inches)	222	262	302	342	382	422	462	502	542	582	622
Center distance	80	120	160	200	240	280	320	360	400	440	

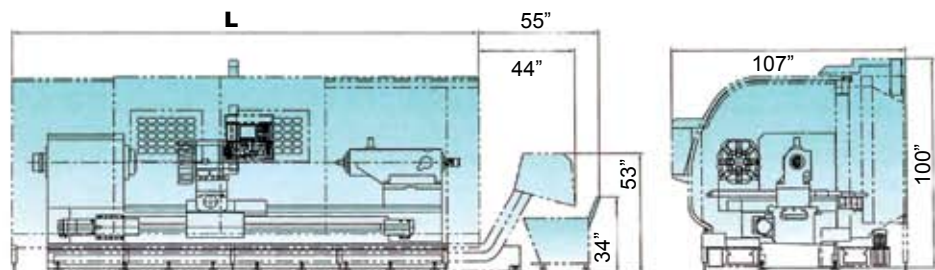
CFH Series Dimensions



L (inches)	218	258	298	338	378	418	458	498	538	578	
618											

CFHD Series Dimensions

CF Series Dimensions



L (inches)	210	250	290	330	370	410	450	490	530	570	610
Center distance	80	120	160	200	240	280	320	360	400	440	480